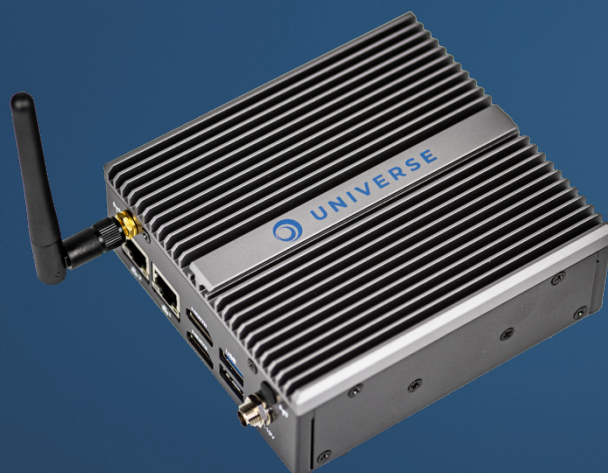


UNIVERSELITE CONTROL



SPECIFICATIONS

| | |
|------------------------|--|
| Embedded License | UNIVERSE LITE |
| Operating System | Microsoft Windows 10 IoT Enterprise 2019 LTSC |
| CPU | Intel® Celeron® J4125 4x 2.0 GHz (max. 2.7 GHz) |
| RAM | 8192MB SO-DDR4 RAM |
| Storage | 128GB SSD |
| Graphics | Intel® UHD max. 4096 x 2160 @ 30Hz |
| Connectivity | |
| ▪ Front | 2x USB 3.0 (Type-A), 1x Line-in (3.5mm Jack) |
| ▪ Back | 2x USB 3.0 (Type-A), 2x Gigabit-LAN (RJ45) 1x COM (RS232 9-pin), 2x HDMI 1.4b 1x PSU-external (DC 12V-19V / 3.42A screwable) |
| ▪ Wireless | WiFi (802.11ac), Bluetooth 4.2 |
| Dimensions (W x H x D) | 109mm x 44mm x 118mm |
| Accessories | PSU (110V-230V / 65W), Power Cord, WiFi-Antenna Wall Mount, VESA-Mount |